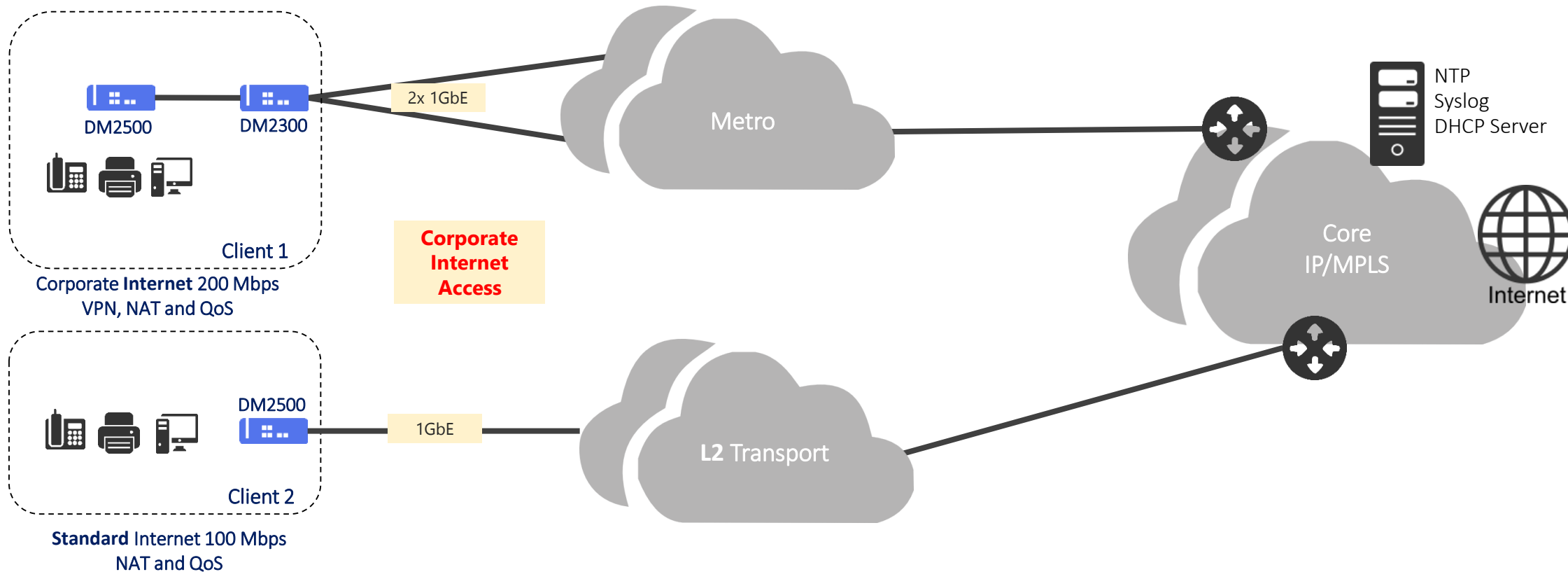


DATA COM

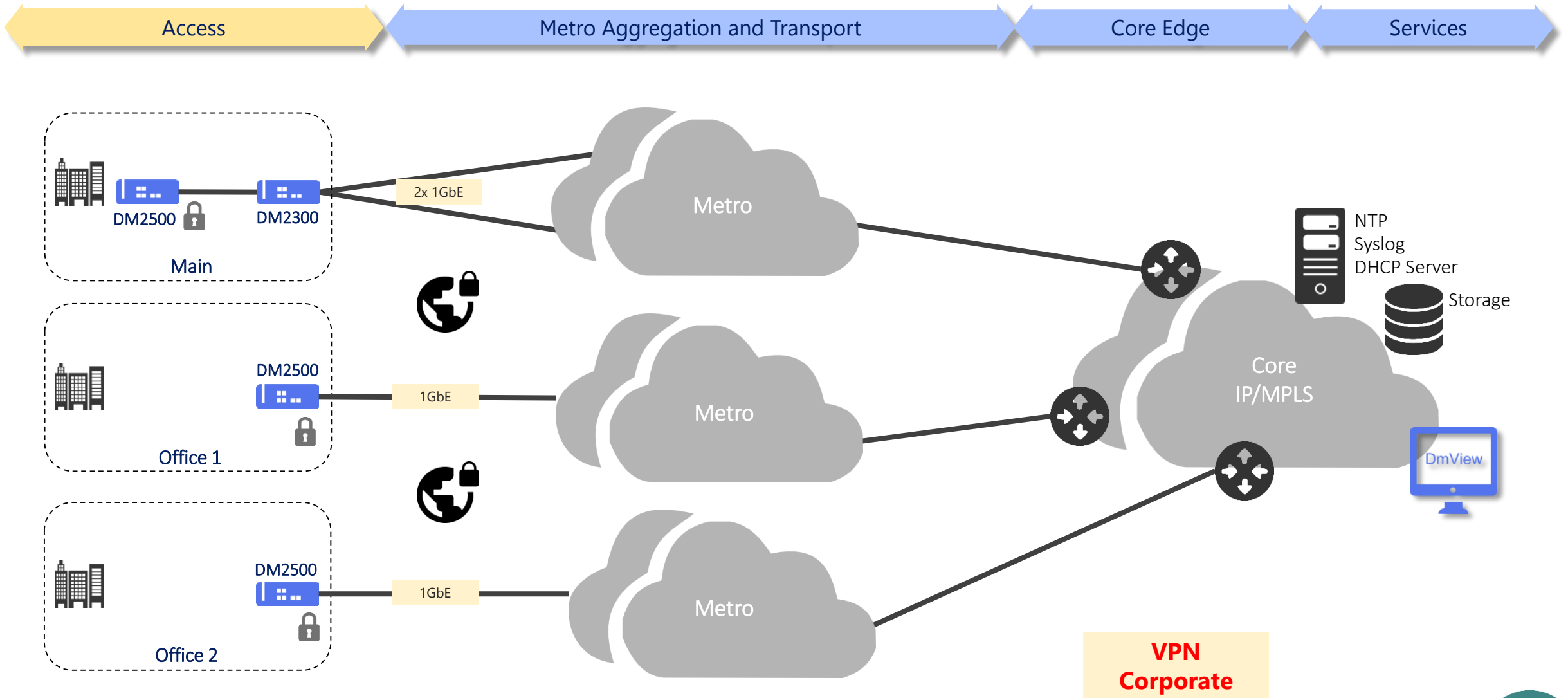
CPE IP Router
DM2500 Series
DATACOM



DM2500 Series: Typical Application



DM2500 Series: Typical Application



DM2500 4GT

CPE Compact Router with 4x 10/100/1000 Base-T Access Ports.

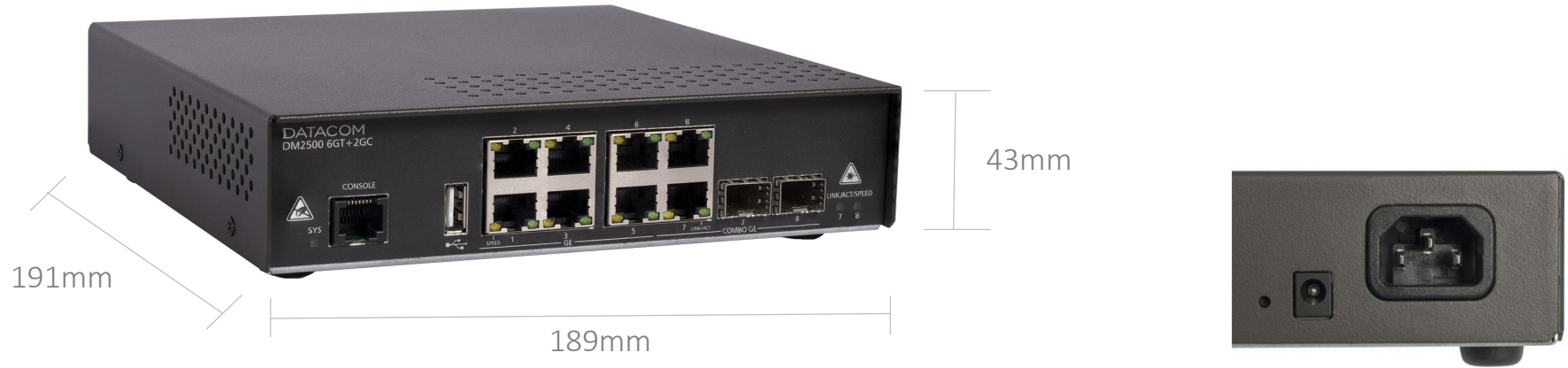


DM2500 6GT+2GC

High Performance Compact CPE Router with 6x 10/100/1000 Base-T Access Ports and 2x Combo ports (SFP or Base-T).



DM2500 Series: Hardware Features



| Hardware Features | DM2500 4GT | DM2500 6GT+2GC |
|-----------------------|---|------------------|
| Operating Temperature | 0°C to 45°C (10% to 90% non-condensing) | |
| Power Supply | 1x Power Input AC/DC Full Range (100-240V & 48-60V) + 1x Power Input DC 12V | |
| Typical Consumption | 10W (Fanless) | 17W |
| Weight | 1,2kg | 1,3kg |
| Management Interfaces | RS232 console and USB console Port | |
| CPU | Dual Core 800Mhz | Quad Core 1.5Ghz |
| RAM Memory | 1GB | 1GB |
| Flash Memory | 4GB | 4GB |

DM2500 Series: Key Features



- ✓ Static and dynamic routing, including **RIP, OSPF** and **BGP**;
- ✓ VLAN and GRE Tunneling;
- ✓ NAT/PAT;
- ✓ NTP, DHCP, LLDP and DNS Services;
- ✓ Packet Classification by IEEE802.1P, DSCP, Source and Destination Port, TCP/UDP Ports;
- ✓ ACL's Matches, Traffic policers/shapers and Packet Scheduling;
- ✓ Management Policies by RADIUS and TACACS.
- ✓ **IPsec ready** ROADMAP TBD

SFP 1GbE

Gigabit Ethernet Optical Module in SFP format. Versions with different power and range specifications are offered.



External AC Power Supply

External AC Power Supply with 12V output for power redundancy.



MA-01 - 19" Rack Adapter

1U tray for installation of up to two side-by-side equipment in 19" racks.



Comparison DM2500 x Competitors

| | DATACOM | | UBIQUITI NETWORKS | MikroTik | CISCO | JUNIPER NETWORKS | Hewlett Packard Enterprise |
|--------------------------|-------------------|-------------------|-------------------|-------------------|------------------------------|----------------------|----------------------------|
| FEATURES | DM2500 4GT | DM2500 6GT+2GC | EdgeRouter Pro | RB3011UiAS-RM | CISCO1941/ K9 | SRX300 | HP MSR2003 AC ROUTER |
| 10/100/1000 Base-T Ports | 4 | 6 | 6 | 10 | 2 | 6 | 2 |
| 1Gbps SFP Ports | 0 | 2 | 2 | 1 | 2 | 2 | ⚠ Slot |
| Power Redundancy | ✓ | ✓ | ✗ | ✗ | ✓ (POE) | ✗ | ✗ |
| CPU | 800Mhz (Dualcore) | 1.5Ghz (Quadcore) | 1Ghz (Dualcore) | 1.4Ghz (DualCore) | N/A (Upgradable) (MultiCore) | N/A High-performance | 800Mhz |
| Flash Memory | 4GB | 4GB | 4GB | 128MB | 4GB | 8GB | 256MB |
| RAM Memory | 1GB | 1GB | 2GB | 1GB | 2GB (max) | 4GB | 1GB |
| PPPoE Client | ✓ | ✓ | ✓ | ✓ | ✓ | ✓ | ✓ |
| Installation | Desktop/Rack | Desktop/Rack | Rack | Rack | Desktop | Desktop | Desktop |
| PoE | ✗ | ✗ | ✗ | ✓ | ✓ | ✗ | ⚠ Slot |

DATAKOM

sales@datacom.ind.br